

15 MM VALVE ACCESSORIES



DIN Connectors

For Use with 15 mm Valves Only

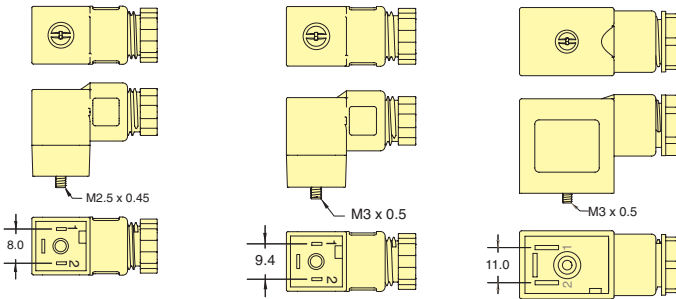
DIN 43650 Form "C" connector with 8.0 mm spade center spacing is designed to connect to 15 mm DIN coils. This standard connector format allows for interchangeability across the industry. Also available with 6' or 12' PVC molded three-wire cord set.



Form C

Industrial Form

Form B



Form C Order No.	Industrial Form Order No.	Form B Order No.	Volts	LED	Cord
CC-C	CC-I	CC-B	6-240	no	-
CC-C-P6	CC-I-P6	CC-B-P6	6-240	no	6'
CC-C-P15	CC-I-P15	CC-B-P15	6-240	no	15'
CC-CLL	CC-ILL	CC-BLL	6-24	yes	-
CC-CLL-P6	CC-ILL-P6	CC-BLL-P6	6-24	yes	6'
CC-CLL-P15	CC-ILL-P15	CC-BLL-P15	6-24	yes	15'
CC-CLM	CC-ILM	CC-BLM	48-110	yes	-
CC-CLM-P6	CC-ILM-P6	CC-BLM-P6	48-110	yes	6'
CC-CLM-P15	CC-ILM-P15	CC-BLM-P15	48-110	yes	15'
		CC-BLH	208-240	yes	-
		CC-BLH-P6	208-240	yes	6'
		CC-BLH-P15	208-240	yes	15'



Connectors

Wire Connector must be ordered separately. Wire gauge AWG 24. Stranding 7/32.

Order No.

- C2A-RB300 Connector with Cable, 11.8" (300 mm)
- C2A-RB500 Connector with Cable, 19.69" (500 mm)
- C2A-RB1000 Connector with Cable, 39.37" (1,000 mm)

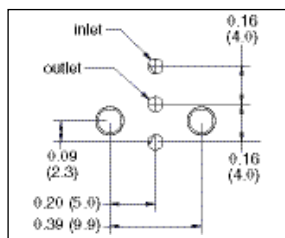
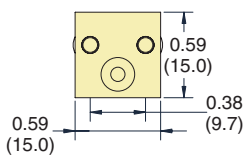
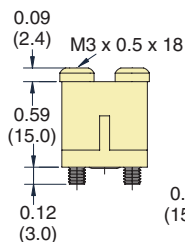
Molex connector #050013-8000.

Cover Plate

Manifold Cover Plate includes plate, gasket and two screws.

Order No.

- E15M-CP 15 mm Cover Plate

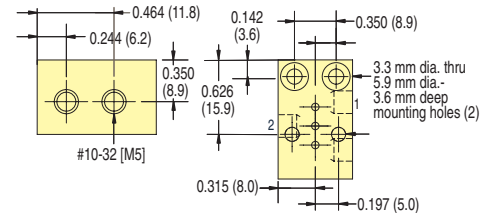


Mounting Interface



Manifolds

Manifolds are available for one to 12 valves, and are supplied with mounting screws and gaskets. Spare hardware and closing plates also available. Add -M5 for Metric ports.

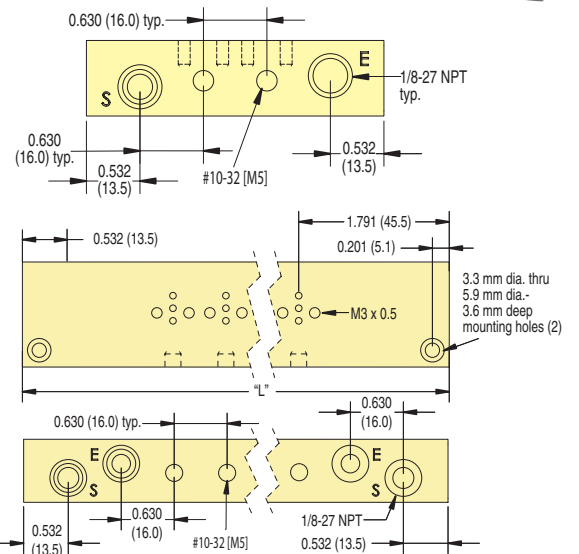


Order No.

- E15M-01

Single Station Manifold

Multi-Station Manifolds



Stations	Order No.	Length "L"
2	E15M-02	2.95" (74.2)
4	E15M-04	4.21" (106.9)
6	E15M-06	5.47" (138.9)
8	E15M-08	6.73" (170.9)
10	E15M-10	9.25" (235.0)
12	E15M-12	10.51" (277.0)
14	E15M-14	11.77" (299.0)
16	E15M-16	13.03" (331.0)